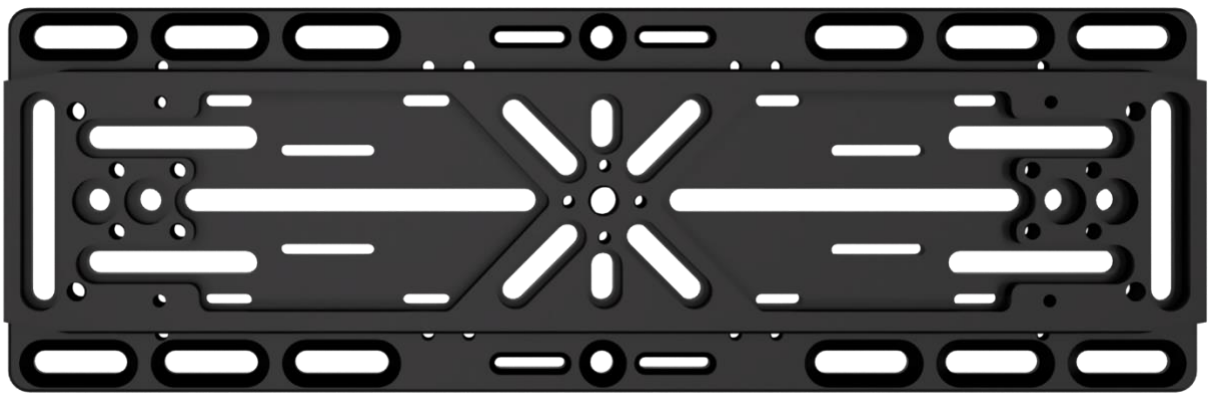
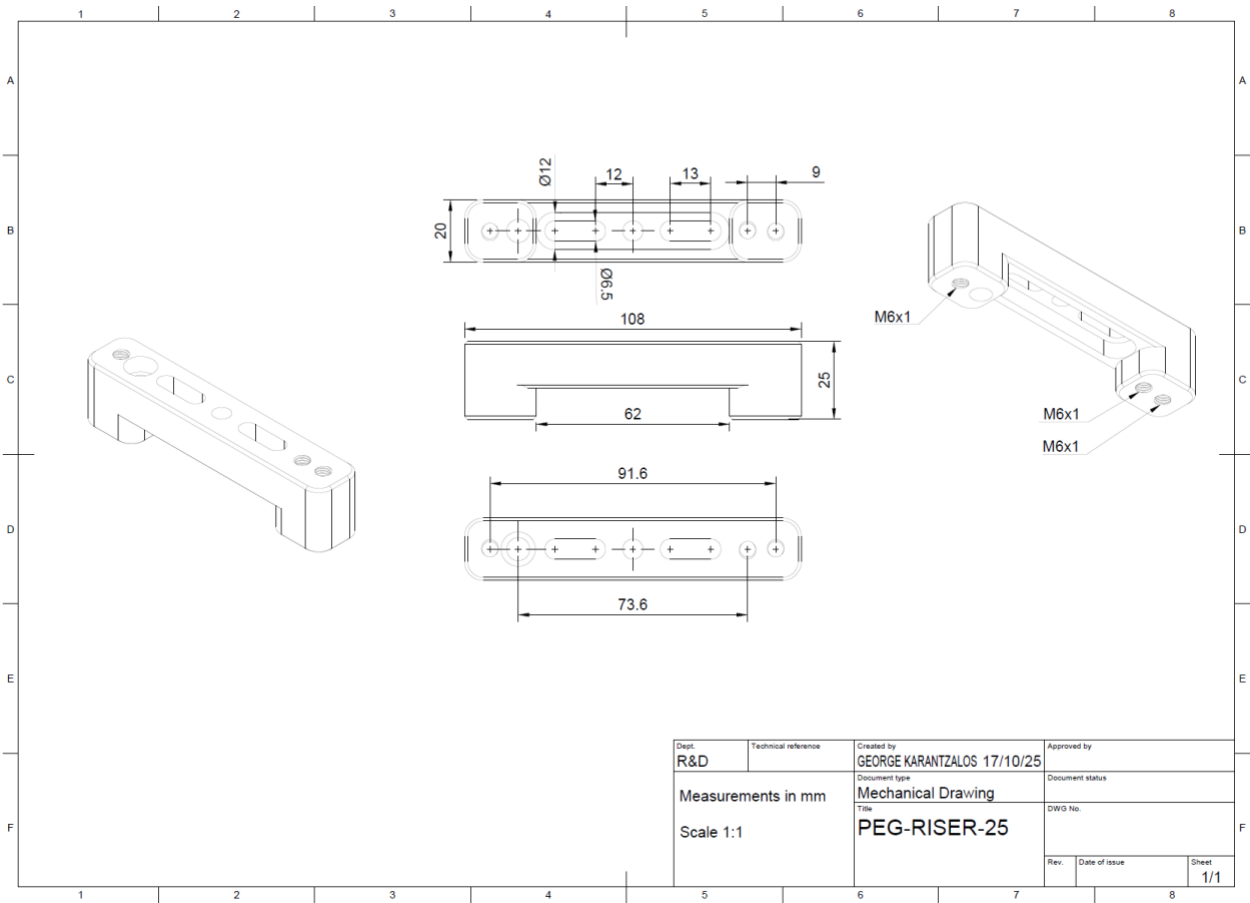


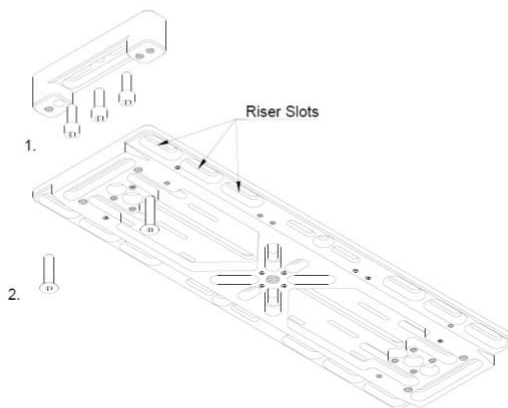
## Pegasus Astro Dovetail 335 & Risers





PEG-RISER-25 Mechanical Drawing





## PEG-RISER-25 installation

1. Use two to three bolts to mount telescope rings on PEG-RISER
2. Use the two provided M6 Countersunk bolts to securely mount PEG-RISER-25 to Riser Slots depending on the telescope ring distance (Adjustable from 315mm to 127mm)

Dept. <b>R&amp;D</b>	Technical reference	Created by <b>GEORGE KARANTZALOS 17/10/25</b>	Approved by	
		Document type <b>Mechanical Drawing</b>	Document status	
		Title <b>PGE-RISER Assembly instructions</b>	DWG No.	
		Rev.	Date of issue	Sheet <b>1/1</b>

Double PEG-RISER-25 installation

1

2

3

4

5

6

7

8

A

B

C

D

E

F

M6x1 x 24

Riser slots

Riser slots

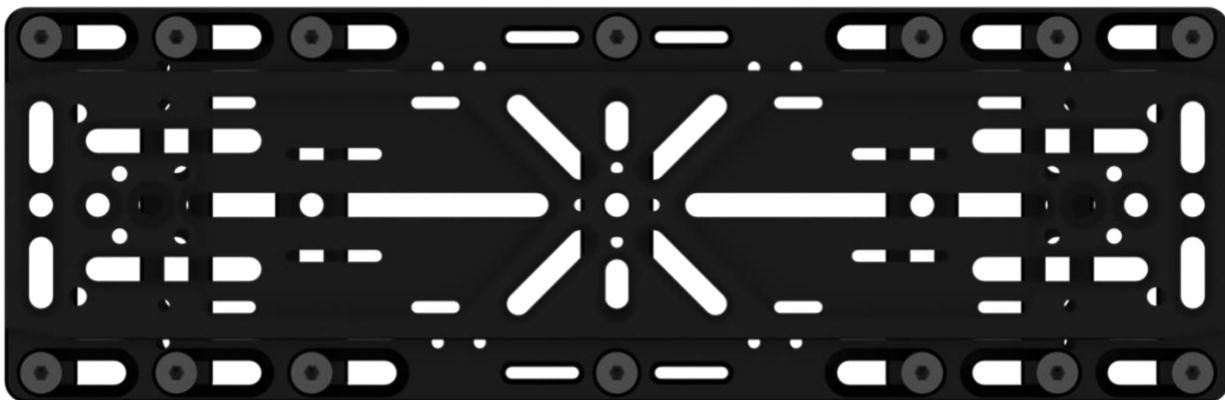
M6x1 x 18

Double Riser 25 installation

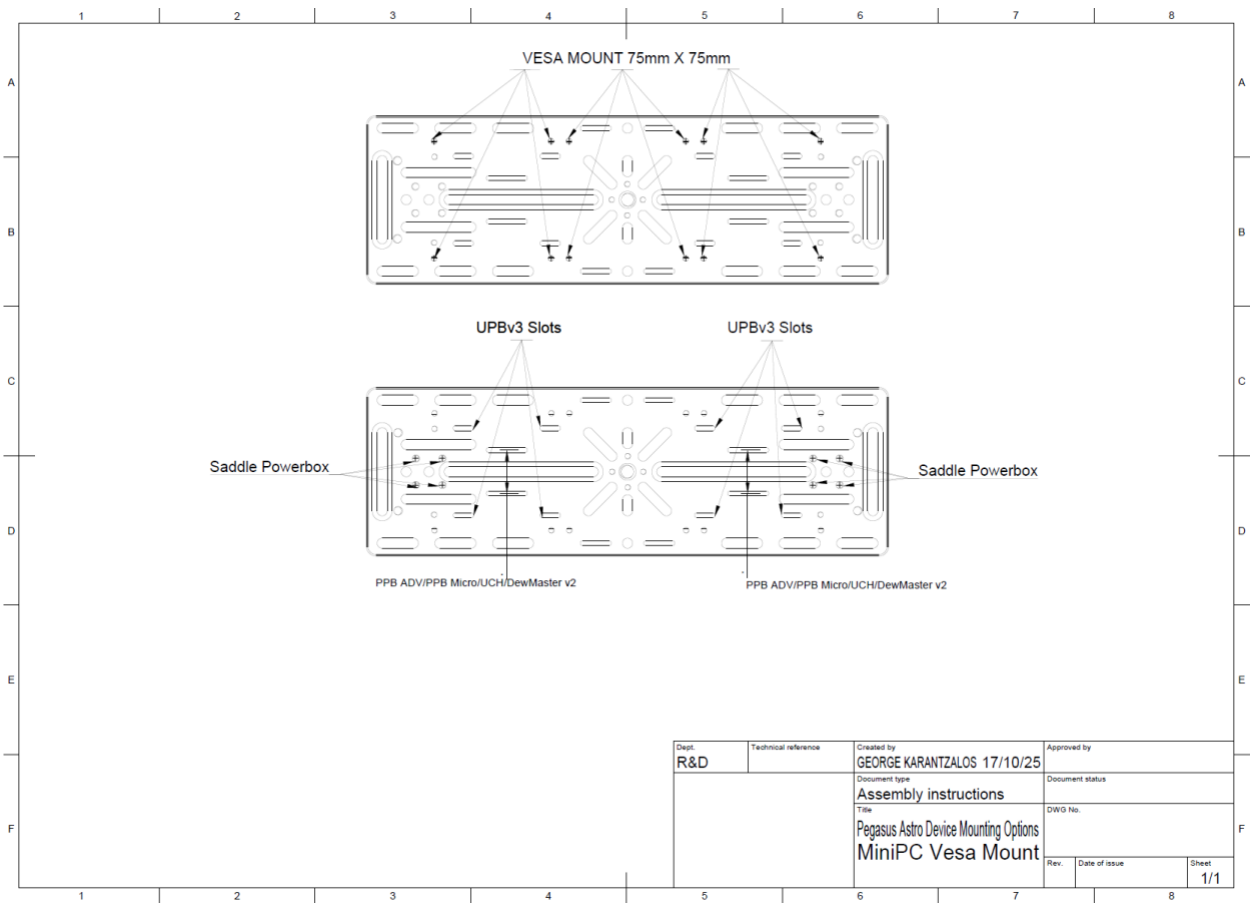
1. Assemble two PEG-RISER-25 with the provided Counterbore M6 Bolts
2. Use the two provided M6 Countersunk bolts to securely mount Double PEG-RISER Assembly to Riser Slots depending on the telescope ring distance (Adjustable from 315mm to 127mm)

Dept.	Technical reference	Created by	Approved by
R&D		GEORGE KARANTZALOS 17/10/25	
		Document type	Document status
		Title	DWG No.
		Double PEG-RISER Assembly instructions	
Rev.	Date of issue	Sheet	
		1/1	

Multiple Riser attachment slots for allow flexible mounting of telescope rings at a variety of distances apart. Each slot has a length of 20mm allowing fine-tuning of each Riser placement.

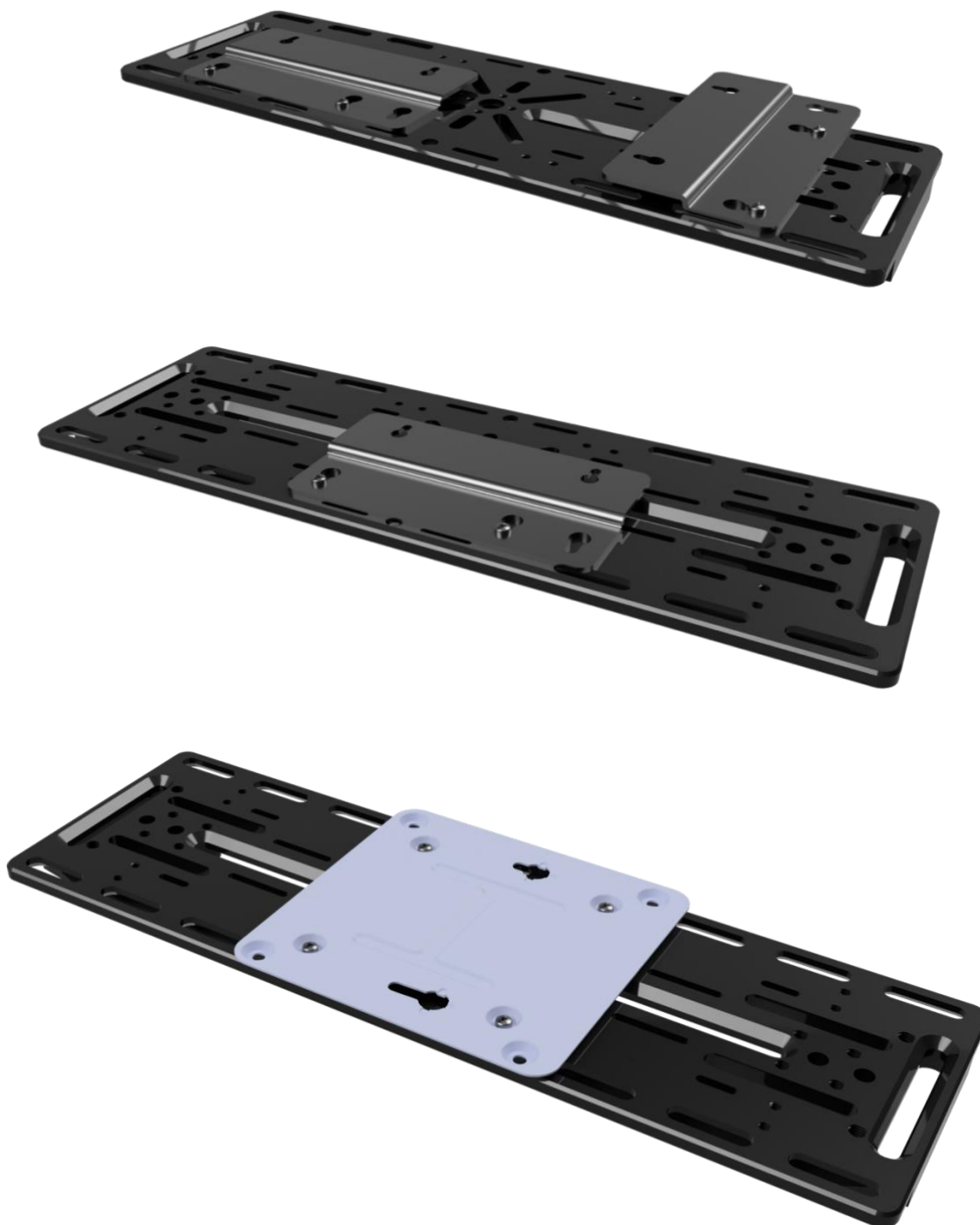


Pegasus Astro Products and MiniPC (VesaMount) mounting positions



## Vesa Mount Mounting examples

Mini PC mounts compatible with the VESA 75mm pattern are supported, offering several easy mounting options for your mini PC on the PEG-DOV335.

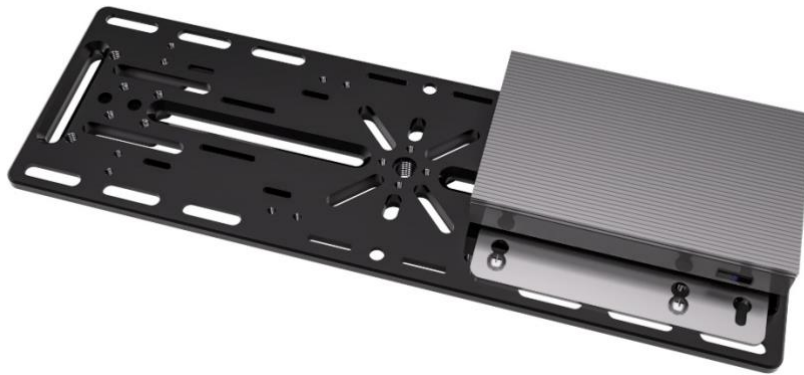




## Mini PC Vesa Mount examples



Middle position



Side position



PPB Adv Gen2 and MelePC



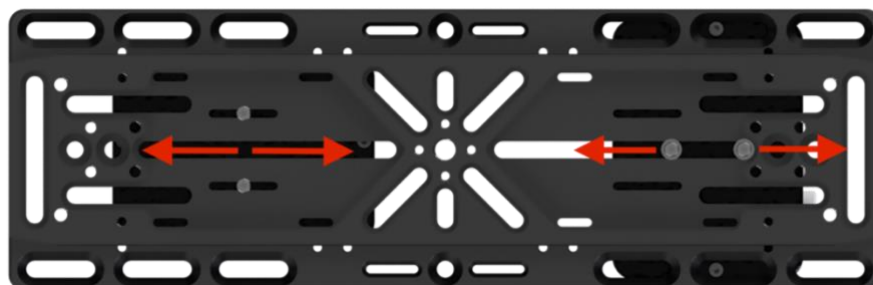
UPBv3 and MelePC

## Pegasus Astro Devices Mounting examples



PPB Adv Gen2

The PPB ADV Gen2 can be mounted both vertically and lengthwise



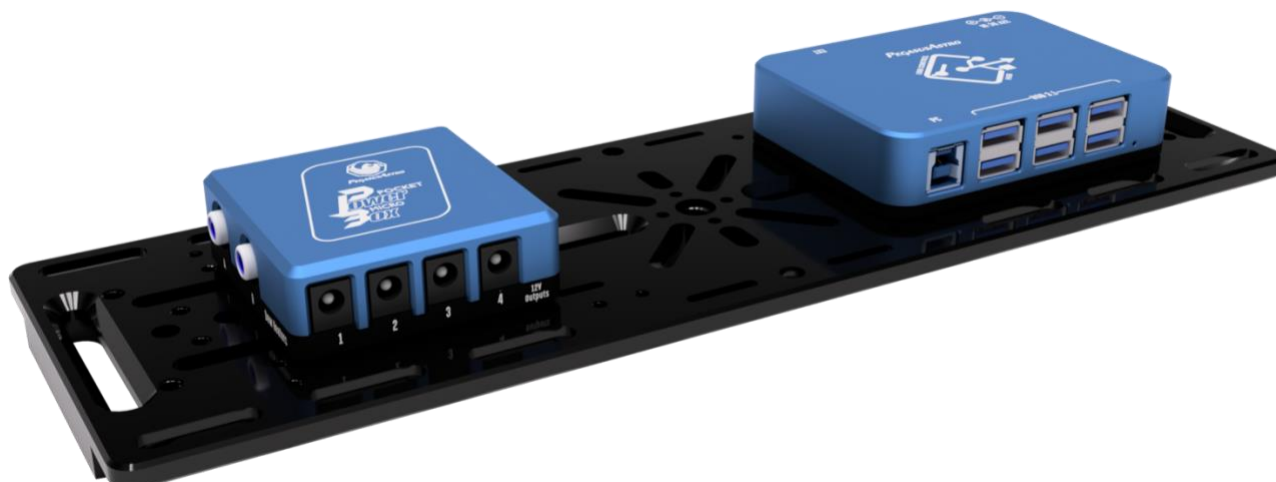
- Vertical installation: Use two M3 x10mm bolts
- Lengthwise installation: Use two M3 bolts along with washers



PPB Adv Gen2 and UCH



PPB ADV and Dew Master v2



PPB Micro and UCH



UPBv3

## Dual US-Clamp

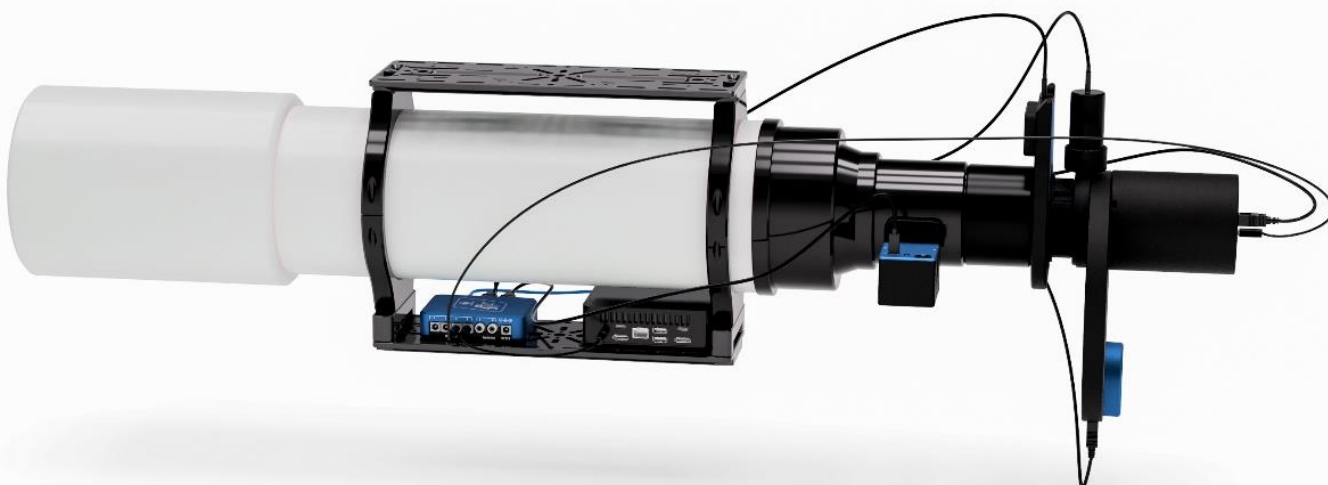


This configuration allows you to use either two telescopes or a telescope paired with a guidescope.

## Dioptric Telescope examples



Mounting on top of the telescope



Mounting under the telescope

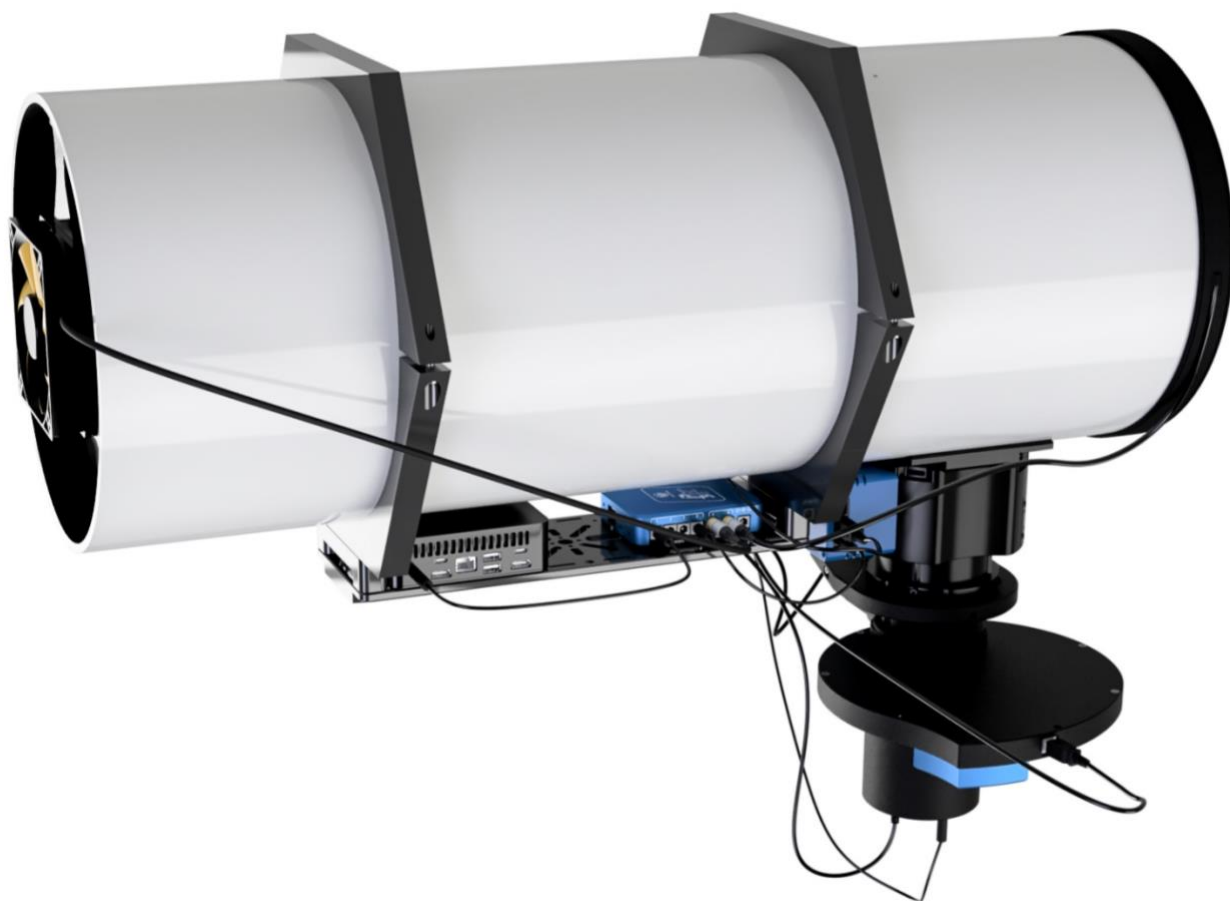


## Newtonian Telescope examples







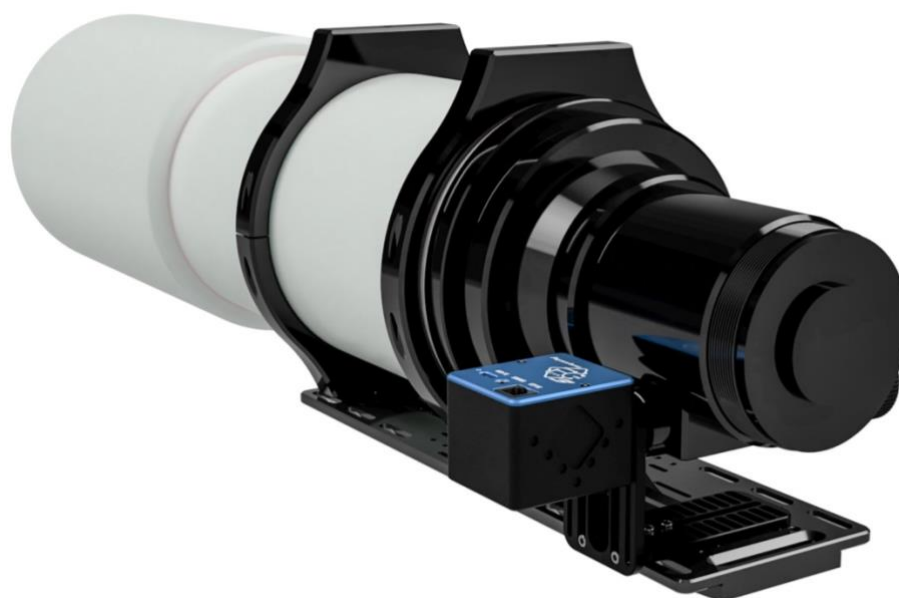
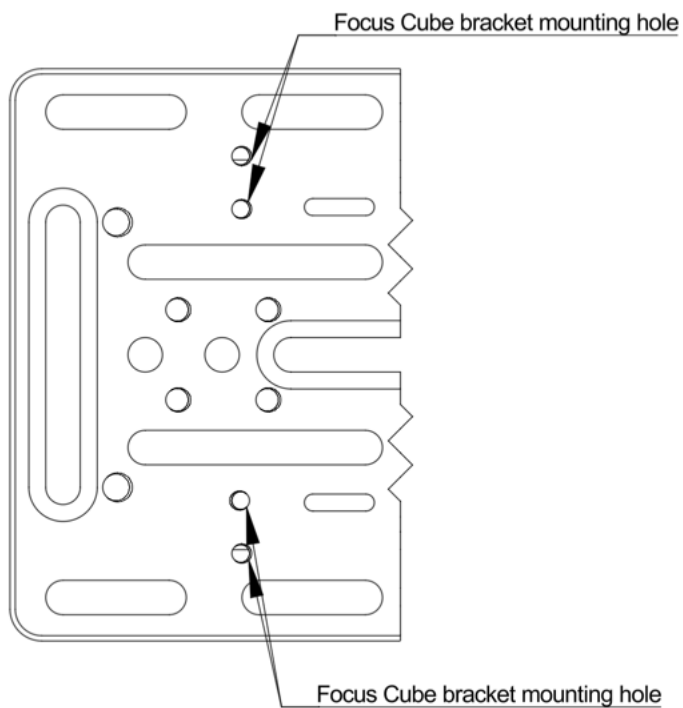


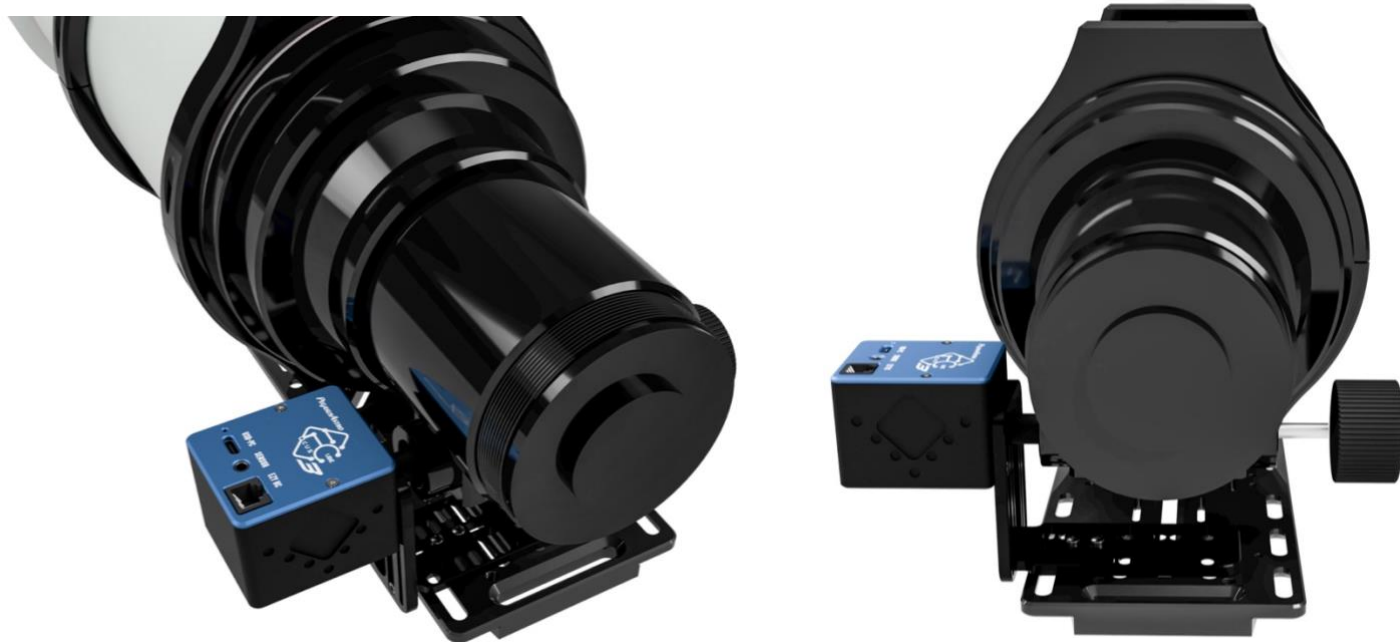
Tip: You can control both your dew heaters and fans via the Dew heater ports

## Pegasus Astro Focus Cube mounting

Mounting an electronic focuser on certain telescopes can be difficult due to absence of screw holes for brackets or having curved focuser shafts.

Pegasus Astro DOV335 supports direct focuser mounting on the dovetail using Pegasus Astro Focus Cube brackets.





Designed and assembled in Greece

For any questions, feedback and support please contact: [support@pegasusastro.com](mailto:support@pegasusastro.com)