

Pegasus Ultimate Power Box v.2 small factor PC base plate installation

Package includes the following items:

- 1 x Baseplate
- 1 x Hook & loop strap
- 4 x m3.5 screws



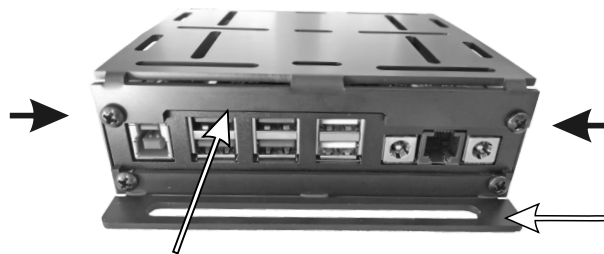
Step 1

Untie the two (2) top stock screws on each side, displayed by the black arrows (keep them in safe place as you don't need them anymore).



Step 2

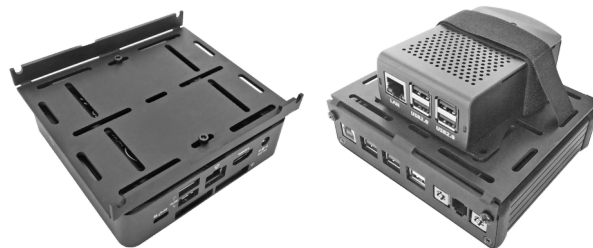
Place the baseplate on top of the UPB v.2 and use the 4 x m3.5 screws to securely lock it.



Make sure that the gap of the baseplate faces the side of USB ports.

Step 3

You can now mount your preferable Mini PC or RPI using bolts or the included strap.



You are ready to go !!!