

## Pegasus Ultimate Power Box v2 2020 enclosure installation

The package includes the following items.

- 1 x UPBv2 aluminum enclosure
- 8 x M3x6mm Allen bolts
- 4 x M3x14mm Philips screws

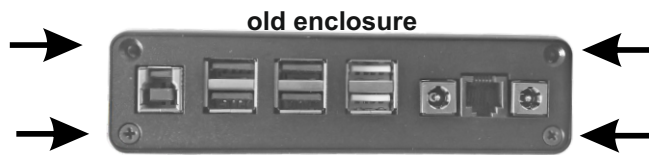
### Step 1

Untie the four (4) bottom screws from the new enclosure.



### Step 2

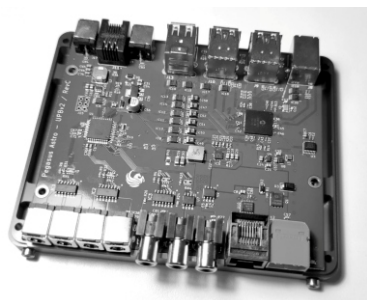
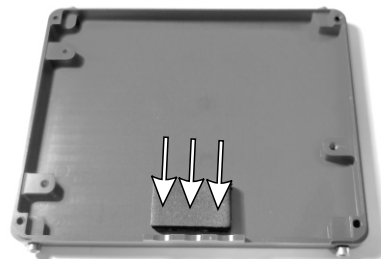
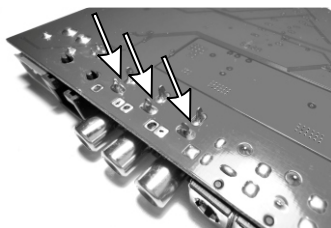
Untie the four (4) stock screws from one side of your old enclosure, displayed by the black arrows.



Store the old enclosure and all of its screws as you don't need them anymore.

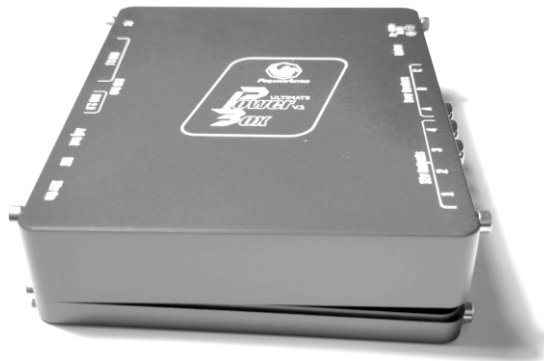
### Step 3

Slide out the circuit board and place it on the new bottom part as shown in the photos below. Your older circuit board doesn't have holes to secure it on the available threads of the bottom part of the enclosure. Therefore, there is a piece of foam glued so when you placed the circuit board, the pins of the Dew Heater sockets will make holes into it and will keep the board in place.



**Step 4**

Place first the USB HUB side of the top part as shown in the photo below.



**Step 5**

Tighten the 4 bottom screws to fully secure the enclosure (bottom and top parts together).



**In case you have the dovetail brackets and the mini PC baseplate.**

The silver Allen hex screws are already in place for your existing dovetail brackets or the top mini PC base plate on the new enclosure.  
If you don't use any of the above you can remove them.

**DO NOT USE THE OLD SCREWS AS THEY DO NOT FIT ON THE NEW ENCLOSURE**



***You are ready to go...***